

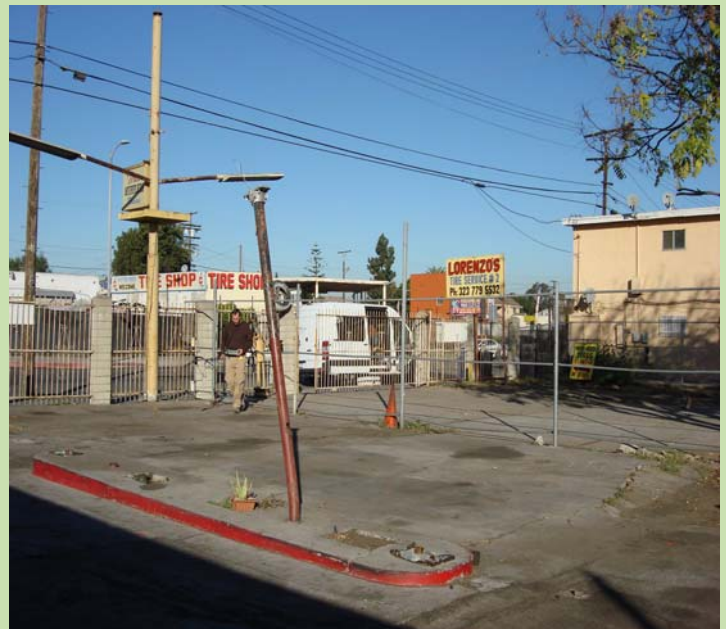
Wilmington & Pacoima Grant

In June of 2011, the City of Los Angeles was awarded a \$400,000 grant to conduct Phase I and Phase II environmental site assessments in the specific neighborhoods of Wilmington and Pacoima. In both neighborhoods, the Brownfields Program is working closely with community organizations. The following sites were prioritized, with input from the local Council Offices and other City Departments, in order to conduct Phase I and Phase II ESAs.

Howard Site

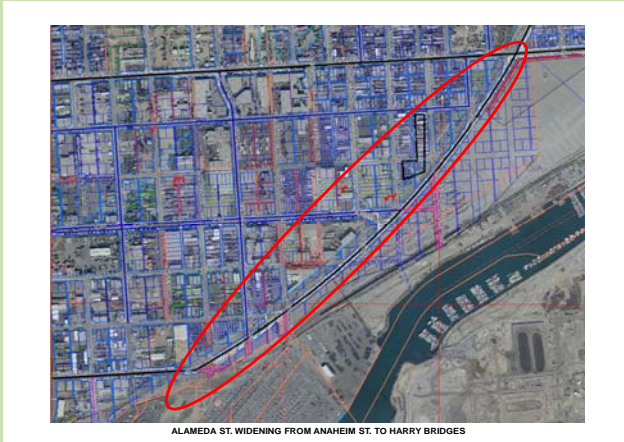
In 2013, a Phase I ESA was conducted for the property located at 11424-11432 South Main Street, an auto repair, tire shop and recycling center. There was also a geophysical survey conducted to locate underground storage tanks. The assessment has revealed evidence of RECs in connection with the site (historical use as a gas station/auto repair; hydraulic hoists; oil-stained soil; former wash rack/ drain).

Further assessment (soil sampling and trenching) is recommended by the investigation, the disposition/ status of the UST(s) is not known at this time. In addition, hazardous materials containers/ drums should be properly stored and placed in a secondary containment to prevent any further releases. It is also recommended that an asbestos survey of the structures be preformed prior to any demolition activities.



Alameda Street Widening

Two Phase I Environmental Site Assessments (ESA) were conducted in January 2014 at the site located between Anaheim Street and Harry Bridges Blvd for southern and northern sections. The assessments counted historical oil wells that were advanced sufficiently near the alignment to result in potential environmental impairments.



At least three sets of oil collection tanks were located sufficiently near the alignment to be recognized environmental conditions. Emissions or seeps resulting from incomplete abandonment may also occur at these former well locations. The earliest historical land use documentation from 1913 shows the presence of rail lines, accompanied near Anaheim Street by a parallel main rail line. Potential contaminants of concern include Crude oil and various types of refined petroleum products, metals from older drilling muds and oil field brines, asbestos.

The proposed project is to widening Alameda Street and provide additional northbound and southbound through-lanes and provide a northbound free right-turn lane from northbound Alameda Street to eastbound Anaheim Street. The strip of property is 30 feet wide and approximately 3,700 feet long. Based on the results of this Phase I Environmental Assessment, additional soil, soil vapor and groundwater sampling is recommended along the alignment to verify the extent of known impacts. Widening Alameda St. between Anaheim St. to Harry Bridges will improve traffic from 4 to 6 lanes, facilitating general goods movement within the community and Los Angeles basin and more importantly directly to the Port of Los Angeles.



Alameda Street Before Widening.

